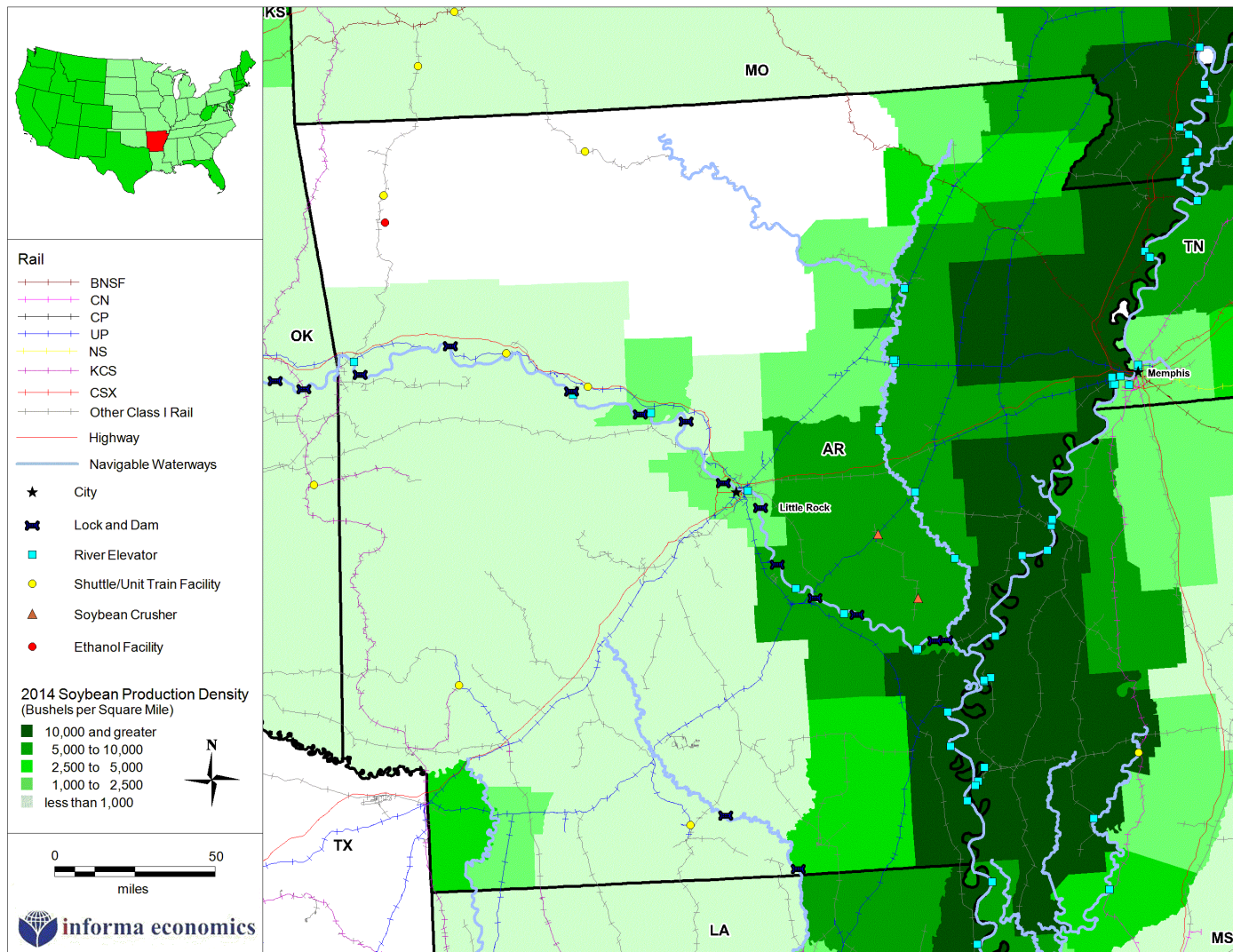




SOY TRANSPORTATION COALITION

FARM TO MARKET: A SOYBEAN'S JOURNEY

ARKANSAS



Production

- Soybean production mostly along eastern border of state, near Mississippi River Delta region.
- Arkansas is a significant producer of poultry, primarily broilers and turkeys.

Infrastructure

- Arkansas has 2,698 miles of rail lines, 656 miles of interstate, and 101,656 total road miles.
- The state also has 6 shuttle facilities, 2 soybean crush facilities, 1 ethanol facility, 182 grain elevators, and 25 river elevators.

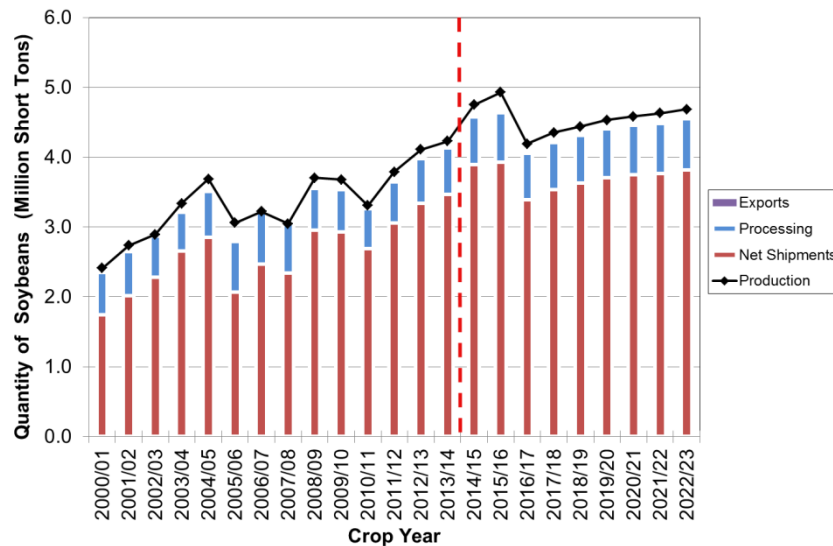


SOY TRANSPORTATION COALITION

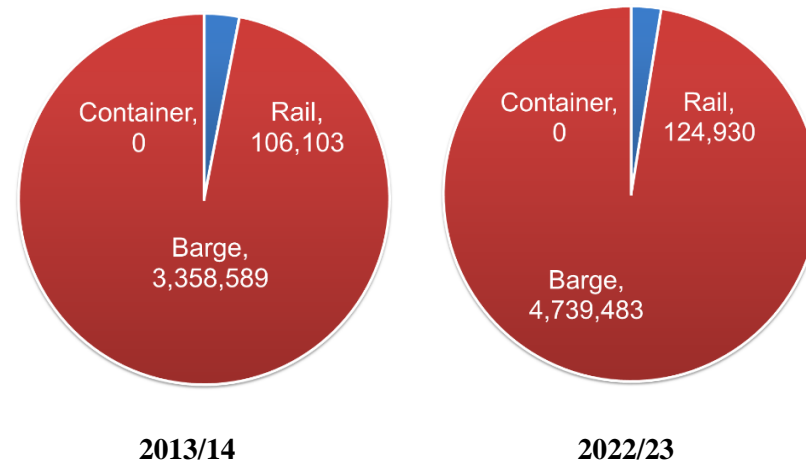
FARM TO MARKET: A SOYBEAN'S JOURNEY

ARKANSAS

Soybean Surplus and Deficit Outlook



Soybean Movements by Mode (Short Tons)



Agricultural Infrastructure: Crush, Ethanol Facilities, Livestock Processing, and Grain Storage

Facility Type	# of Facilities	Capacity/Size
Soybean Crushers	2	1,976 MT/Day
Ethanol Facility* (operating)	1	0.04 MGY
Federally Inspected Livestock Slaughter/Processing Facilities	73	n/a
State Inspected Livestock Slaughter/Processing Facilities	0	n/a
Grain Elevators**	182	327,467 Thous. Bu. Storage
Shuttle Elevators	6	5,935 Thous. Bu. Storage
River Elevators	25	62,019 Thous. Bu. Storage

* 1 Cellulosic ethanol facility is included in ethanol facility database.

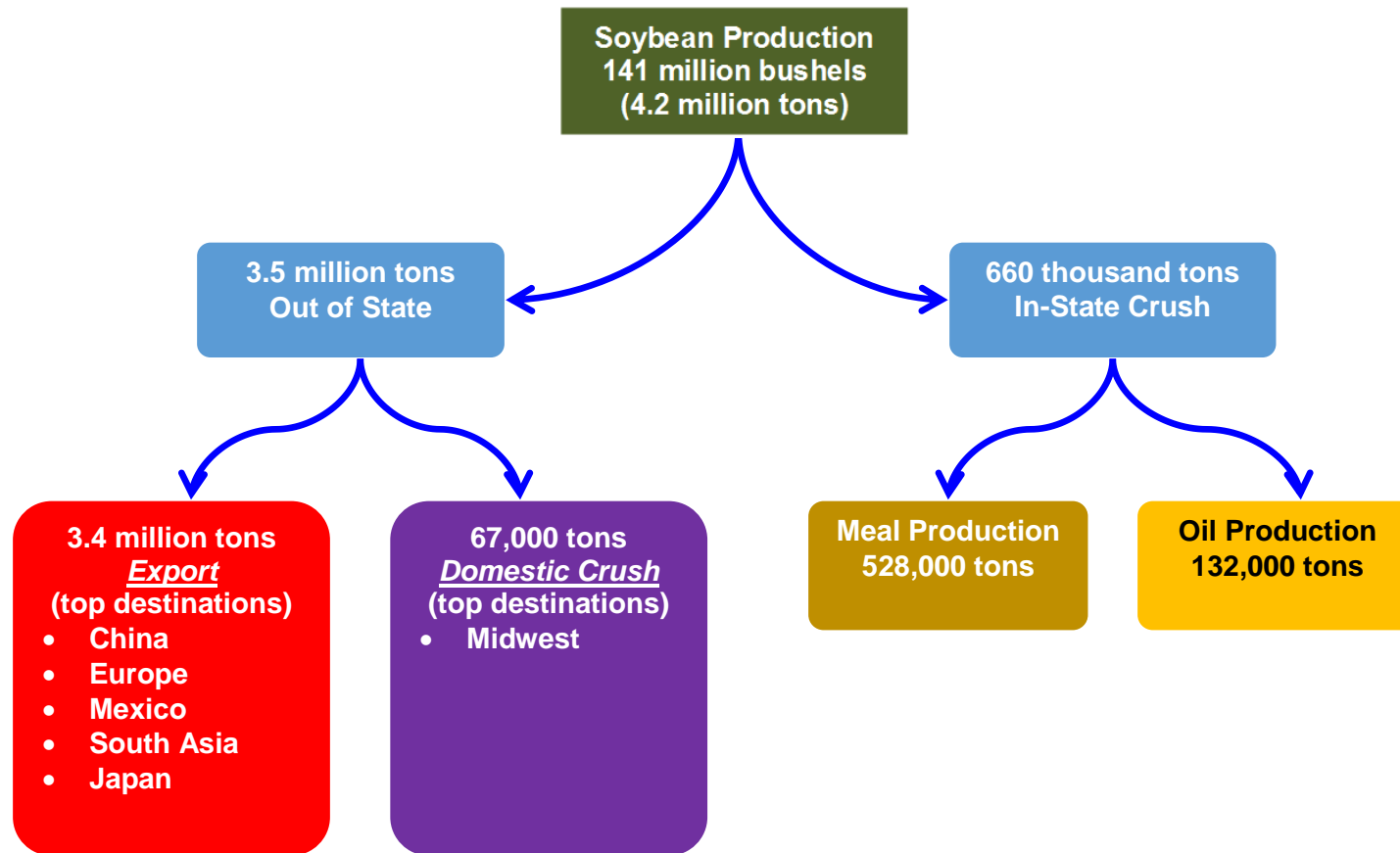
** Shuttle and river elevators are included in the list of grain elevators.



SOY TRANSPORTATION COALITION

FARM TO MARKET: A SOYBEAN'S JOURNEY

ARKANSAS FLOWCHART OF SOYBEAN MOVEMENTS (2013/14)



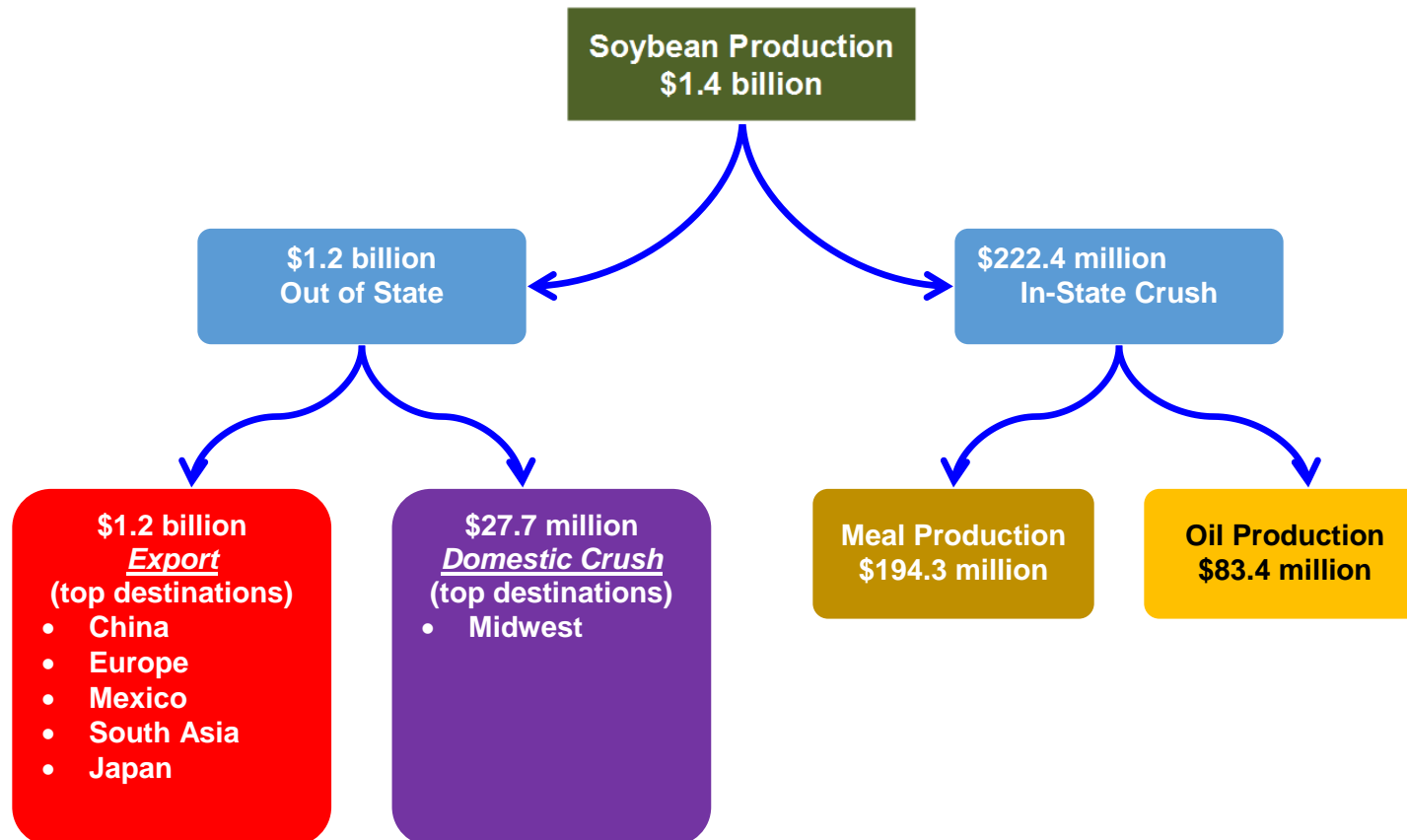
*Assumption \$25 premium for export



SOY TRANSPORTATION COALITION

FARM TO MARKET: A SOYBEAN'S JOURNEY

ARKANSAS FLOWCHART OF SOYBEAN VALUE (2013/14)





SOY TRANSPORTATION COALITION

FARM TO MARKET: A SOYBEAN'S JOURNEY

Arkansas Animal Outlook

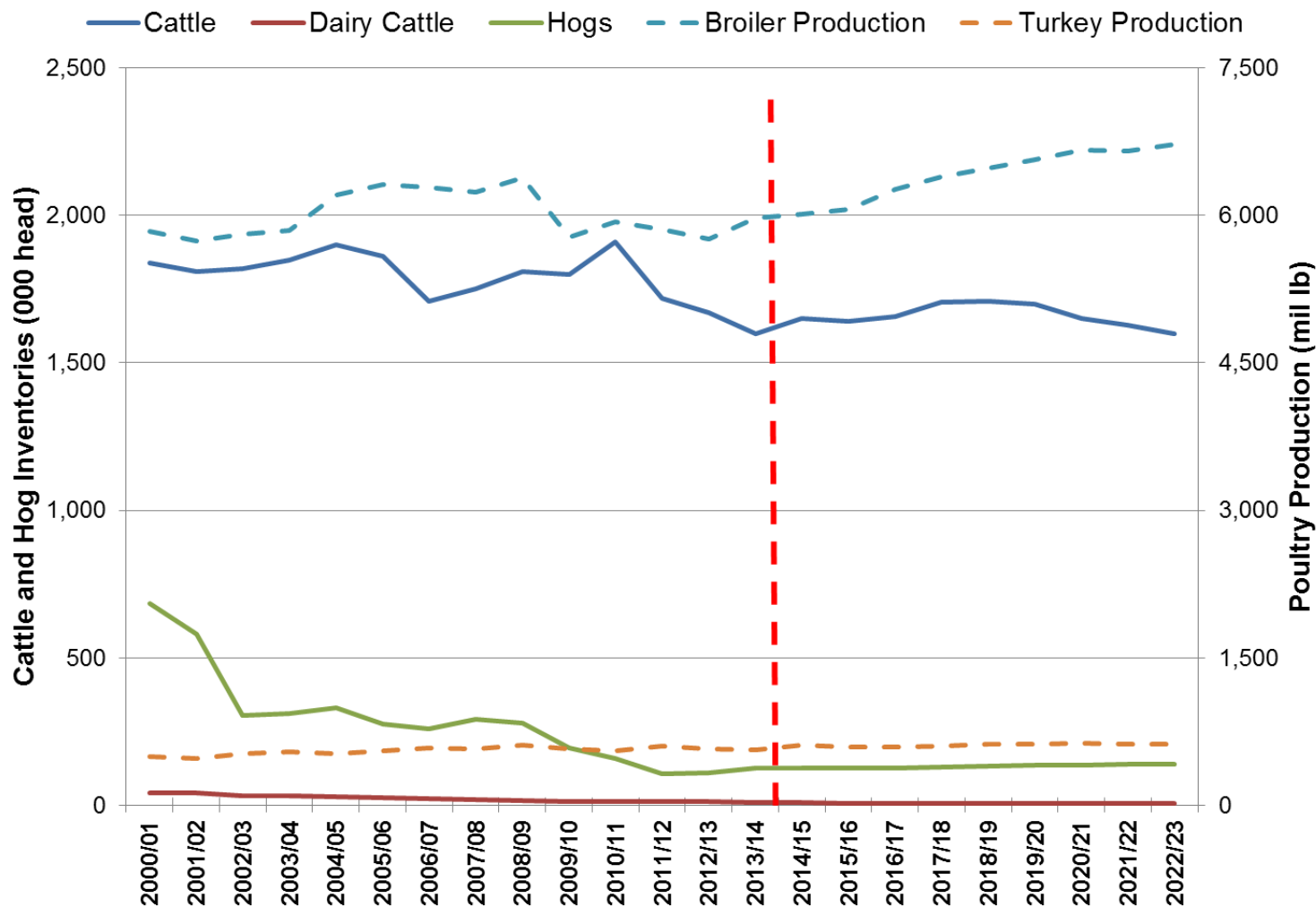
- Arkansas is a large producer of poultry, and is expected to increase production through 2022/23. In 2013/14, Arkansas' poultry production accounted for 12% of U.S. production levels.
- Broiler production in Arkansas is anticipated to grow by 12% over 2013/14 levels in 2022/23, from 6 billion pounds to 6.7 billion.
- In 2013/14, turkey production in the state reached 560 million pounds. Production is expected to expand by 11% to 622 million pounds in 2022/23. Arkansas is also a large producer for turkeys.
- Arkansas' cattle herds will remain the same from 2013/14 to 2022/23 with 1.6 million head, while dairy cattle herds will decrease by 44% from 9 thousand head in 2013/14 to 5 thousand in 2022/23.
- Arkansas' hog inventory will increase by 10%, from 2013/14 levels of 125 thousand head to 138 thousand in 2022/23.



SOY TRANSPORTATION COALITION

FARM TO MARKET: A SOYBEAN'S JOURNEY

Arkansas Livestock Inventories and Poultry Production



Source: Informa (Forecast), USDA (History)

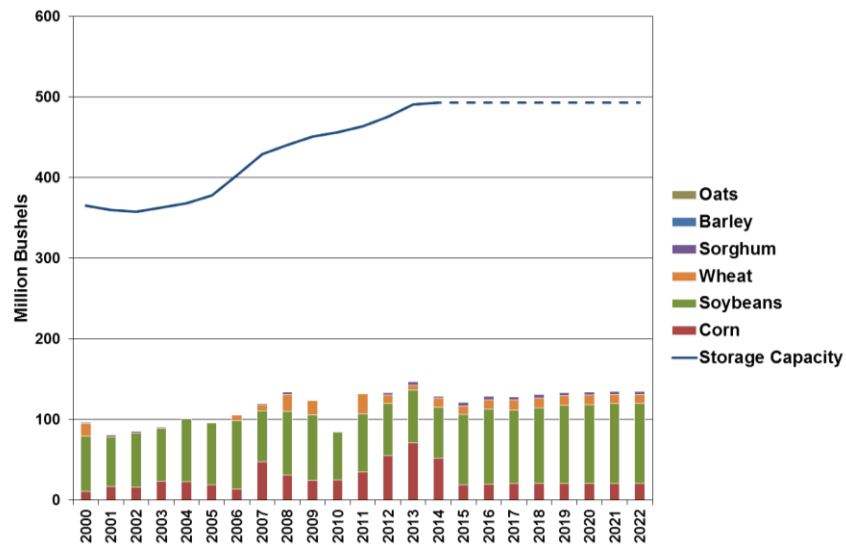


SOY TRANSPORTATION COALITION

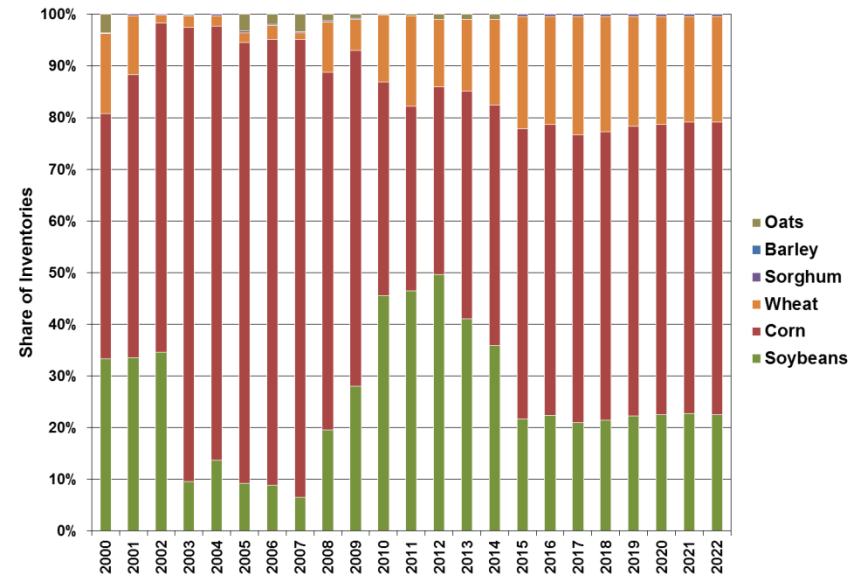
FARM TO MARKET: A SOYBEAN'S JOURNEY

Arkansas December 1 Crop Storage Capacity and Inventories

Crop Storage Capacity and Inventories



Share of Crop Inventories



"Farm to Market: A Soybean's Journey" can be accessed at www.unitedsoybean.org or www.soytransportation.org

Funded by the Soybean Checkoff

