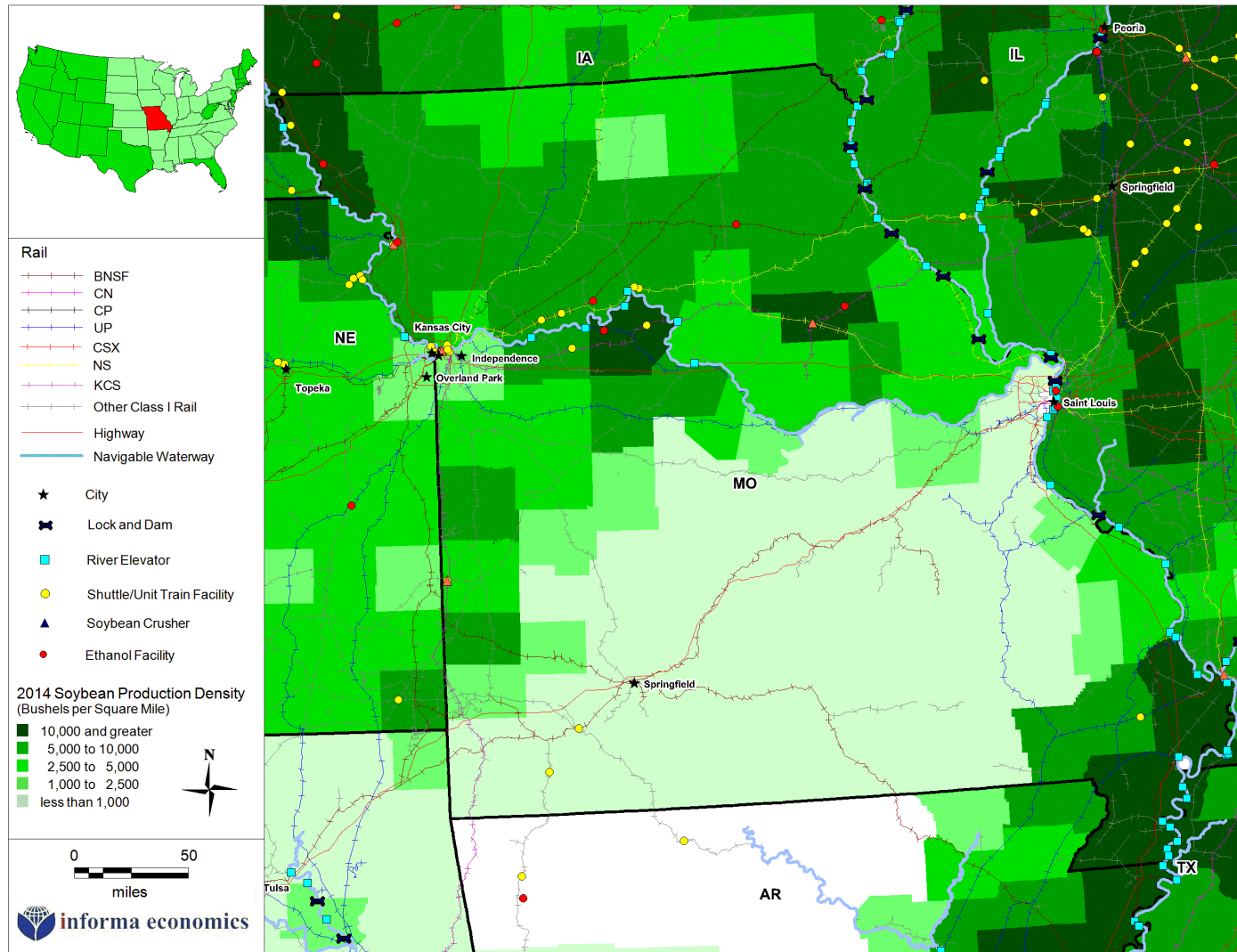




SOY TRANSPORTATION COALITION

FARM TO MARKET: A SOYBEAN'S JOURNEY

MISSOURI



Production

- Soybean production mostly in the northern portion of the state, with production densities highest throughout the northern portion of the state.
- Missouri is a key contributor of cattle, hogs and turkey to U.S. production levels.

Infrastructure

- Missouri has 3,957 miles of rail lines, 1,379 miles of interstate, and 131,900 miles of roadways.
- Missouri has 18 shuttle facilities, 4 soybean crush facilities, 6 ethanol facilities, 359 grain elevators, and 26 river elevators.

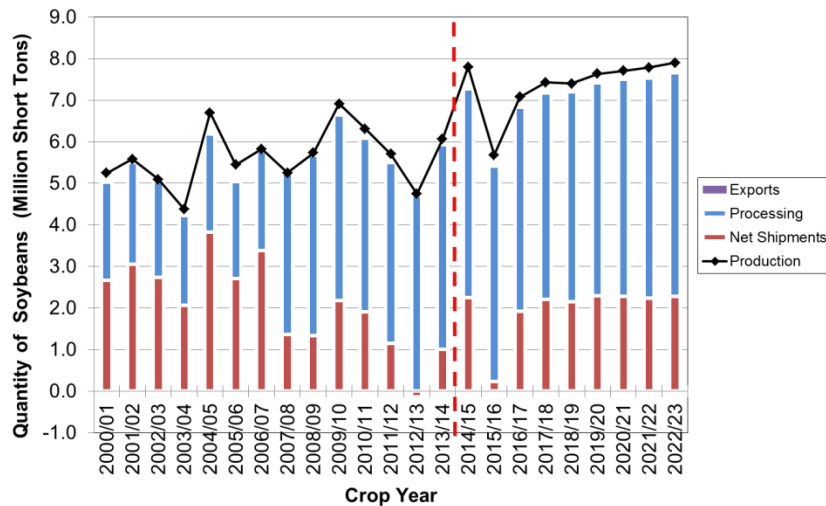


SOY TRANSPORTATION COALITION

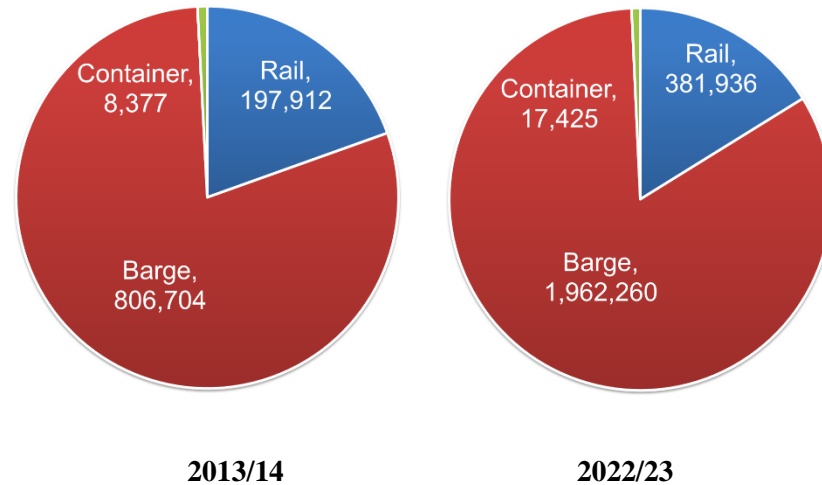
FARM TO MARKET: A SOYBEAN'S JOURNEY

MISSOURI

Soybean Surplus and Deficit Outlook



Soybean Movements by Mode (Short Tons)



Agricultural Infrastructure: Crush, Ethanol Facilities, Livestock Processing, and Grain Storage

Facility Type	# of Facilities	Capacity/Size
Soybean Crushers	4	11,882 MT/Day
Ethanol Facility (operating)	6	266 MGY
Federally Inspected Livestock Slaughter/Processing Facilities	139	n/a
State Inspected Livestock Slaughter/Processing Facilities	31	n/a
Grain Elevators*	359	248,812 Thous. Bu. Storage
Shuttle Elevators	18	42,384 Thous. Bu. Storage
River Elevators	26	50,413 Thous. Bu. Storage

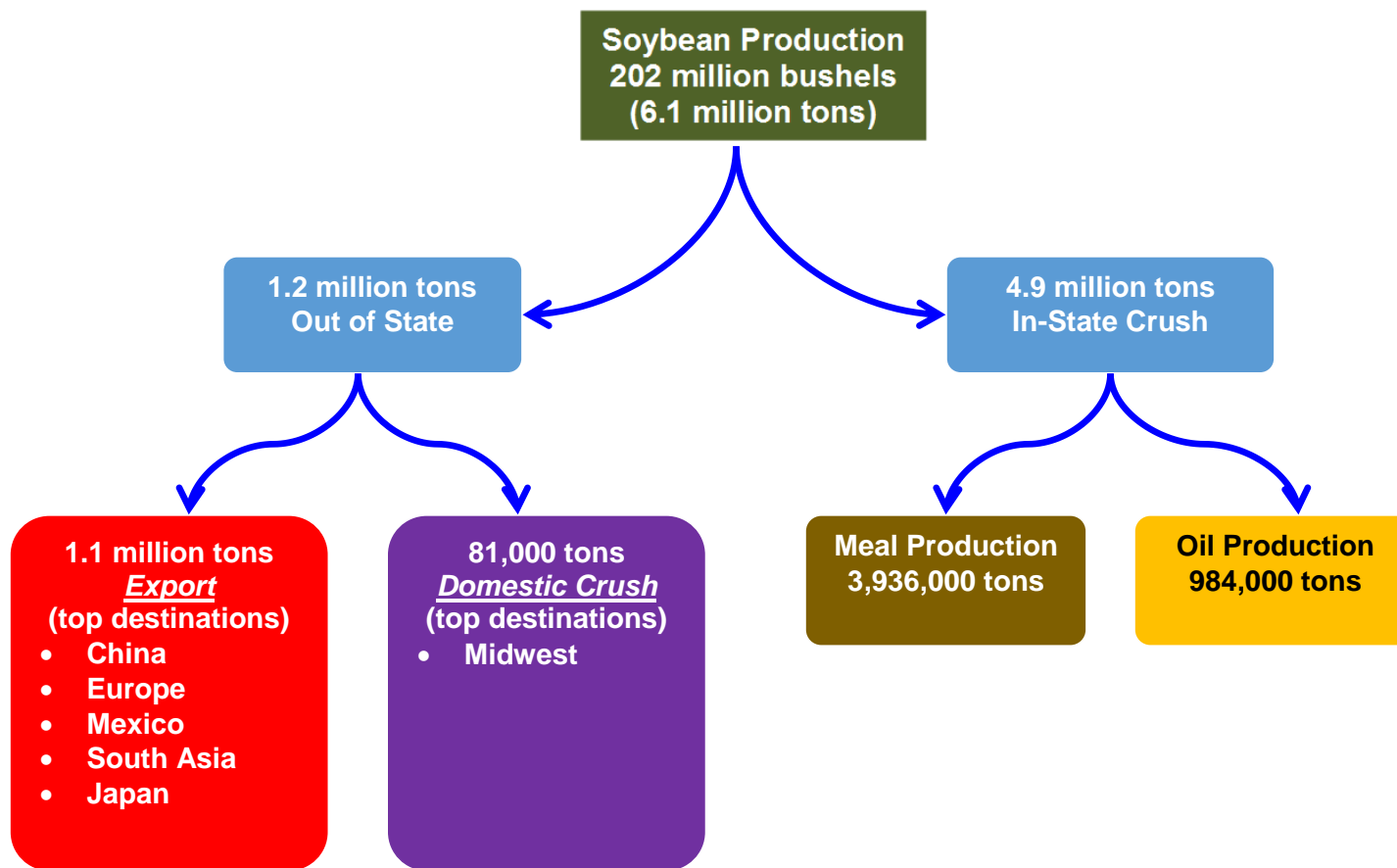
* Shuttle and river elevators are included in the list of grain elevators.



SOY TRANSPORTATION COALITION

FARM TO MARKET: A SOYBEAN'S JOURNEY

MISSOURI FLOWCHART OF SOYBEAN MOVEMENTS (2013/14)

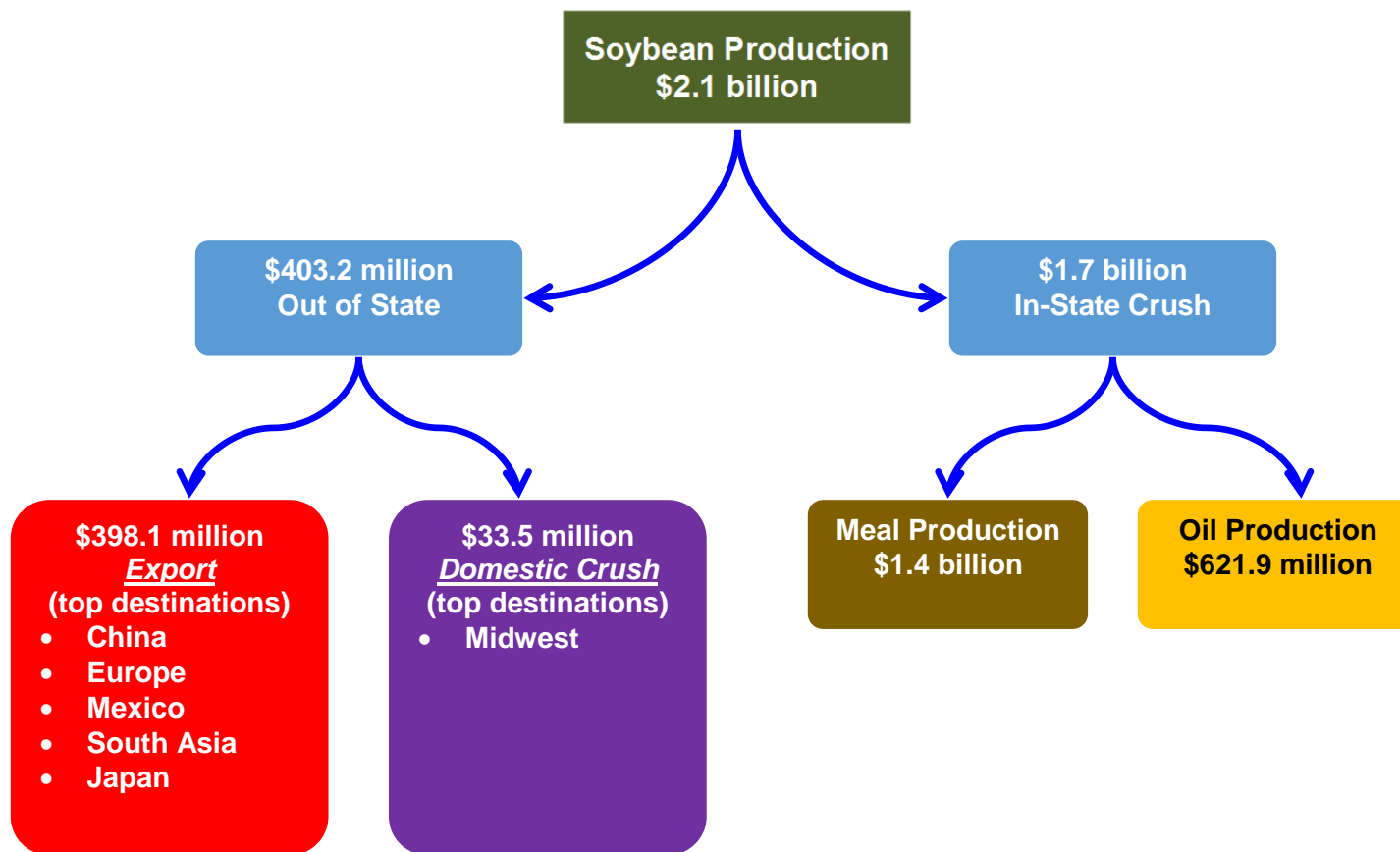




SOY TRANSPORTATION COALITION

FARM TO MARKET: A SOYBEAN'S JOURNEY

MISSOURI FLOWCHART OF SOYBEAN VALUE (2013/14)





SOY TRANSPORTATION COALITION

FARM TO MARKET: A SOYBEAN'S JOURNEY

Missouri Animal Outlook

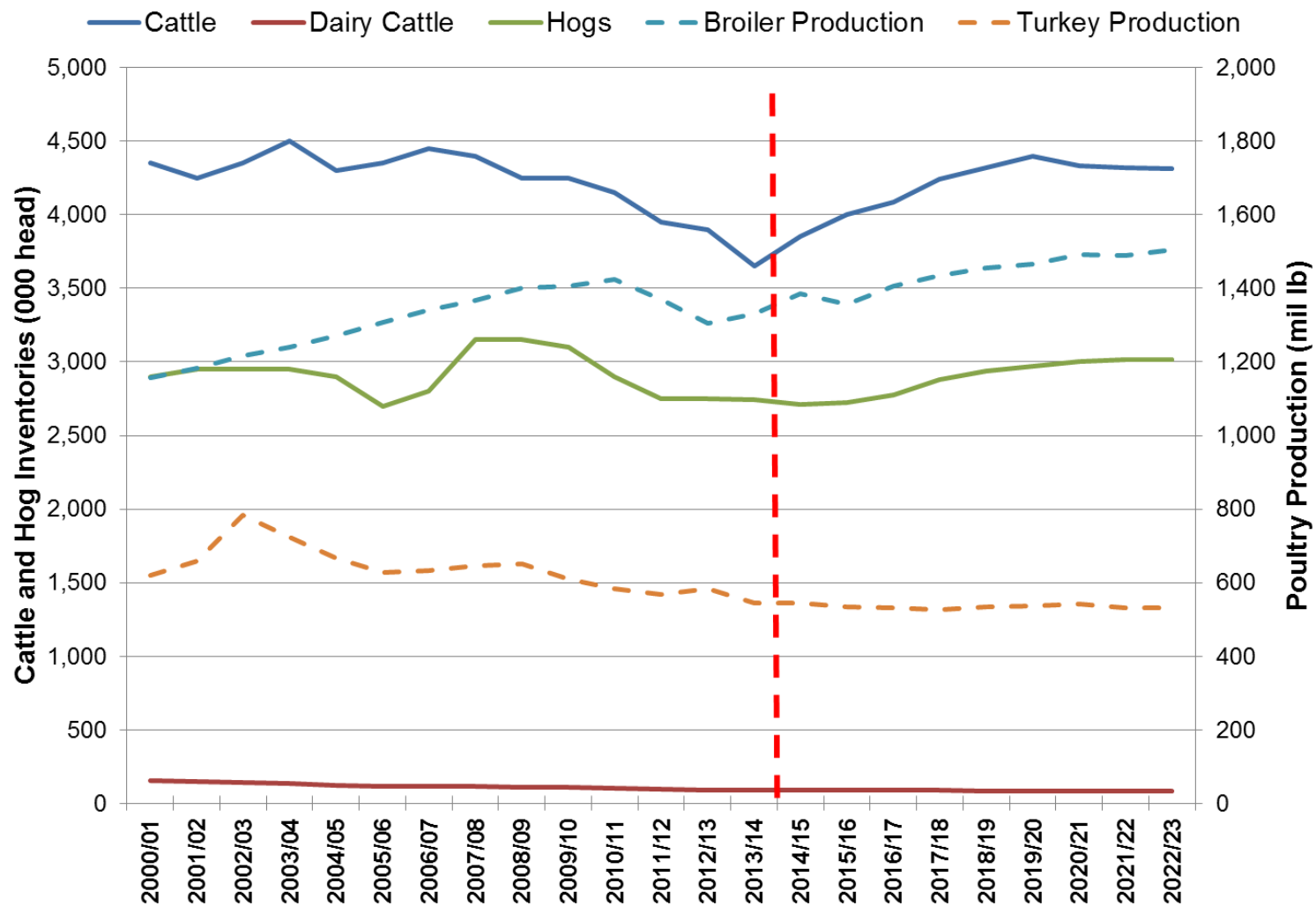
- Cattle inventories in Missouri totaled 3.7 million head in 2013/14, and are expected to increase 18% to 4.3 million head in 2022/23. Missouri's total cattle inventories represent approximately 4% of total U.S. cattle inventories. Dairy cattle inventories in the state are anticipated to decrease by 9%, from 93 thousand head in 2013/14 to 85 thousand head in 2022/23.
- In 2013/14, broiler production reached 1.3 billion pounds, and is expected to increase 13% to 1.5 billion in 2022/23. Broiler production in Missouri represents 3% of total U.S. broiler production.
- Missouri's turkey production represents 7% of total U.S. turkey production. In 2013/14, production reached 544 million pounds. By 2022/23, production is anticipated to decrease 2%, to 531 million pounds.
- Hog inventories in Missouri are anticipated to increase 10%, from 2.7 million head in 2013/14 to 3 million head in 2022/23. Missouri hog inventories represent 4% of total U.S. hog inventories.



SOY TRANSPORTATION COALITION

FARM TO MARKET: A SOYBEAN'S JOURNEY

Missouri Livestock Inventories and Poultry Production



Source: Informa (Forecast), USDA (History)

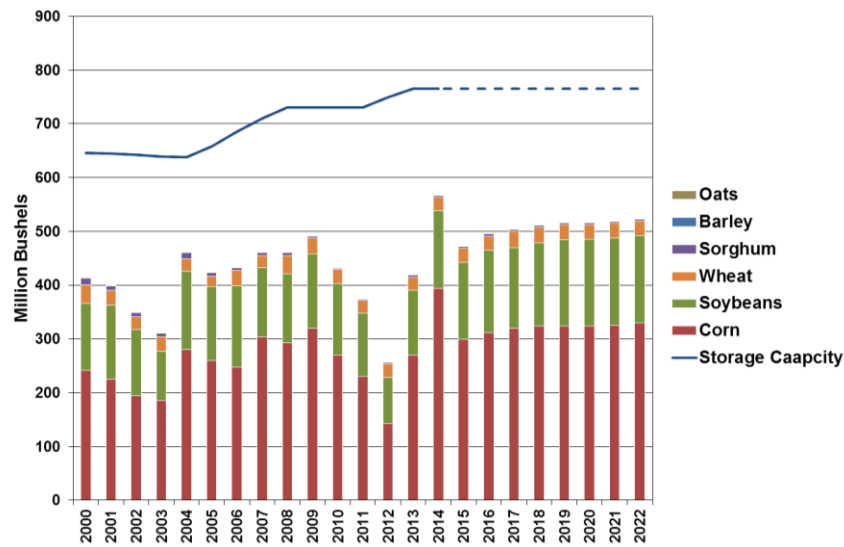


SOY TRANSPORTATION COALITION

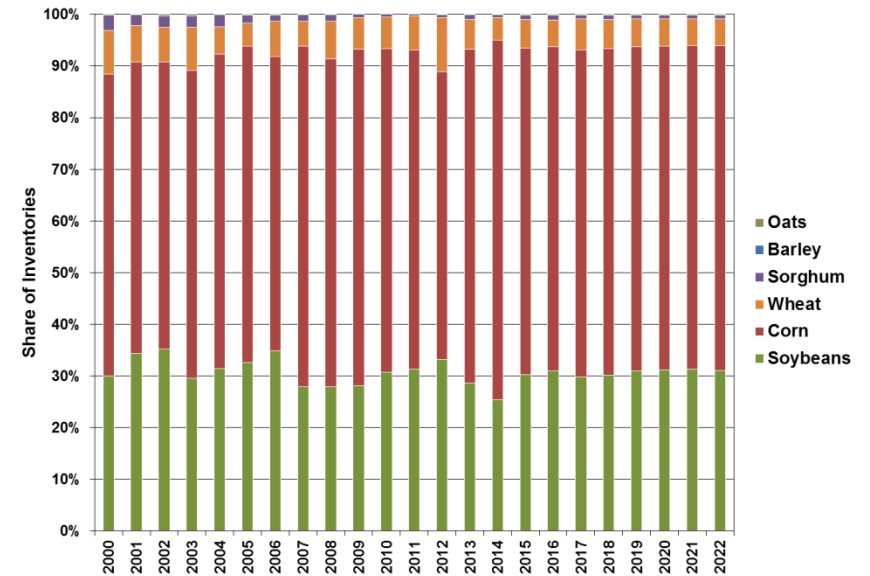
FARM TO MARKET: A SOYBEAN'S JOURNEY

Missouri December 1 Crop Storage Capacity and Inventories

Crop Storage Capacity and Inventories



Share of Crop Inventories



"Farm to Market: A Soybean's Journey" can be accessed at www.unitedsoybean.org or www.soytransportation.org

Funded by the Soybean Checkoff

