



SOY TRANSPORTATION COALITION

RURAL INFRASTRUCTURE: A More Productive Path Forward

Ohio Agricultural Production and Rural Infrastructure

Ohio Trends in Agricultural Production and Infrastructure

Highlights

- In many states the percentage of the state population designated by the U.S. Census Bureau as living in rural areas has declined, but in Ohio, the absolute number of residents in rural areas has actually increased in recent decades to 2.6 million people in 2000.
- Farm products make up approximately 12% of total rail freight tons originating in Ohio.
- While the value of agricultural production in Ohio increased by 732% from 1950 to 2007, the number of farms decreased by 64%.

Production Consumed on Farm

- Home consumption of a farm's production has changed dramatically. In 1950, the value of farm production consumed at home in Ohio was 6.42%.
- In contrast, in 2010 just 0.16% of the value of production in Ohio was consumed at home. This shift amounts to an even greater reliance by agricultural producers on rural infrastructure to transport farm products.

Rural Population Trends

- In 1930 there were 2,139,326 people living in Ohio, with 32.2% of that population in rural areas.
- By comparison, in 2010 there were 11,536,504 people living in Ohio, with 22.1% of that population in rural areas.

Agricultural Production

	Then			Now			Change
	Year	Quantity	Percentage of U.S.	Year	Quantity	Percentage of U.S.	Percentage Change in Quantity
Consolidation Trends: Number of Farms	1950	208,000	3.7%	2010	74,700	3.4%	-64.1%
Farmland Trends: Land in Farms (Acres)	1950	21,800,000	1.8%	2010	13,700,000	1.5%	-37.2%
Average Farm Size (Acres)	1950	105	49%	2010	183	44%	75%
Population Trends: Population Density (Pop. per Square Mile)	1930	163	466%	2010	282	322%	73.6%
Production Trends: Volume of Production (Million Bushels)	1940	211	4.4%	2011	776	4.3%	268%

Ohio Agriculture and Rural Infrastructure

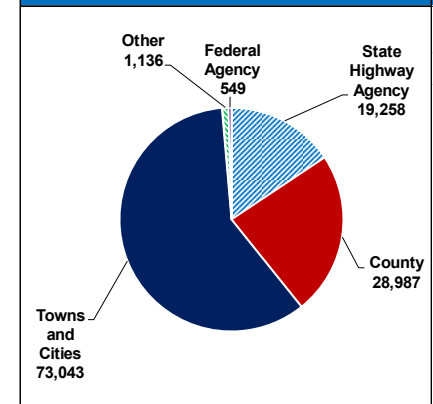
Highlights

- Roads** With 122,973 miles of road as of 2008, Ohio accounts for 3.0% of U.S. road miles.
- Railroad** Ohio had 9,002 miles of railroad in 1920 (around the time of the peak rail mileage), but this mileage had fallen to 8,131 miles in 1965 and decreased even further to 5,286 freight railroad miles in 2009.
- Waterways** Ohio has approximately 440 miles of inland waterways.
- Bridges** Ohio has 27,403 bridges, and approximately 23.3 percent of those are considered structurally deficient or functionally obsolete.

Did you know?

- In Ohio in 2007, there were an average of 177 soybean acres per soybean farm, while for the U.S. the average soybean area per soybean farm was 229 acres.
- Broilers are a major consumer of soybean meal. In 2007, there were 49.66 million broilers sold in Ohio and 8,915 million broilers sold in the U.S.
- Average farm size in the U.S. increased from 213 acres in 1950 to 418 acres in 2010, while average farm size in Ohio increased from 105 acres to 183 acres over the same period.
- In Ohio in 1945, there were 19,545 grain combines, while in 2007 there were 20,299 self-propelled grain and bean combines in the state.

Miles of Road by Owner for Ohio





SOY TRANSPORTATION COALITION

RURAL INFRASTRUCTURE: A More Productive Path Forward

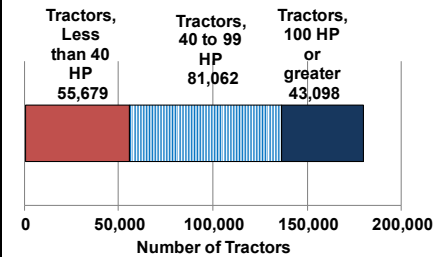
Ohio Agricultural Production and Rural Infrastructure

Consolidation Trends: Fewer Farms and Larger Average Farm Size

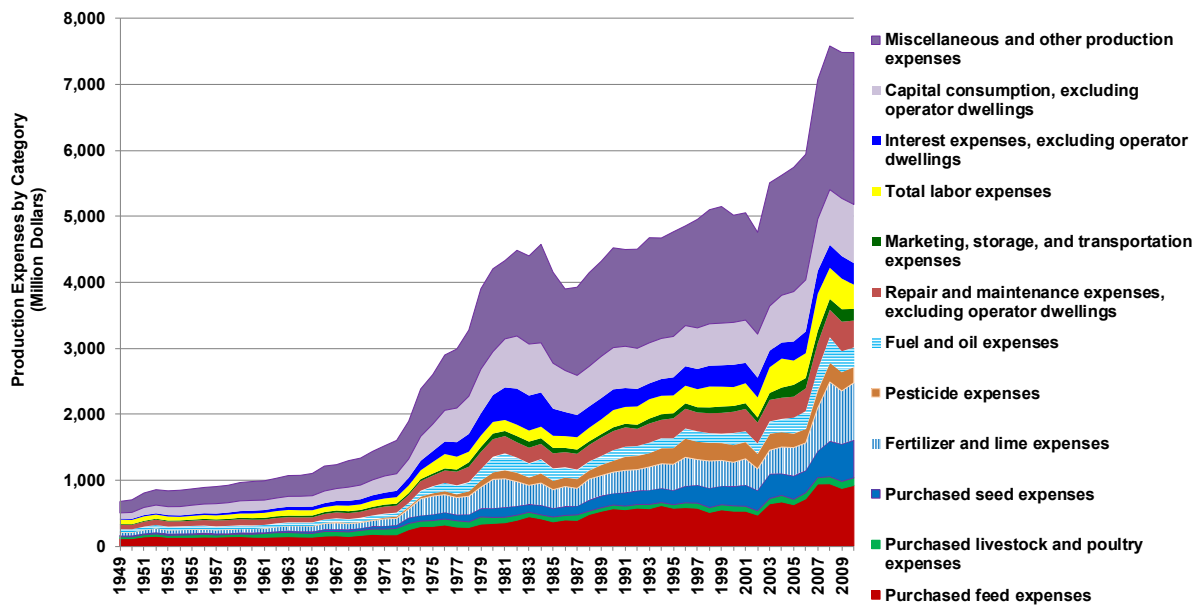
	Then (1954)		Now (2007)		Change	
	Number of Farms	Average acreage or number of head per farm for farms with production	Number of Farms	Average acreage or number of head per farm for farms with production	Percentage Change in No. of Farms	Percentage Change in Avg. Farm Size
Corn for Grain	134,577	25 acres	24,436	148 acres	-82%	484%
Soybeans	40,666	26 acres	23,892	177 acres	-41%	574%
Wheat	99,354	17 acres	11,485	64 acres	-88%	272%
Cattle and Calves Inventory	137,003	18 head	26,105	49 head	-81%	178%
Hogs Sold	68,331	48 head	4,505	1,305 head	-93%	2,629%
Broilers Sold	1,461	9,331 head	791	62,776 head	-46%	573%
All Farms	177,074	113 acres	75,861	184 acres	-57%	63%

Farm Equipment

Farm Equipment Used: Number of Tractors of Various Sizes, 2007



Farm Input Trends: Ohio Farm Inputs by Type, 1949-2010



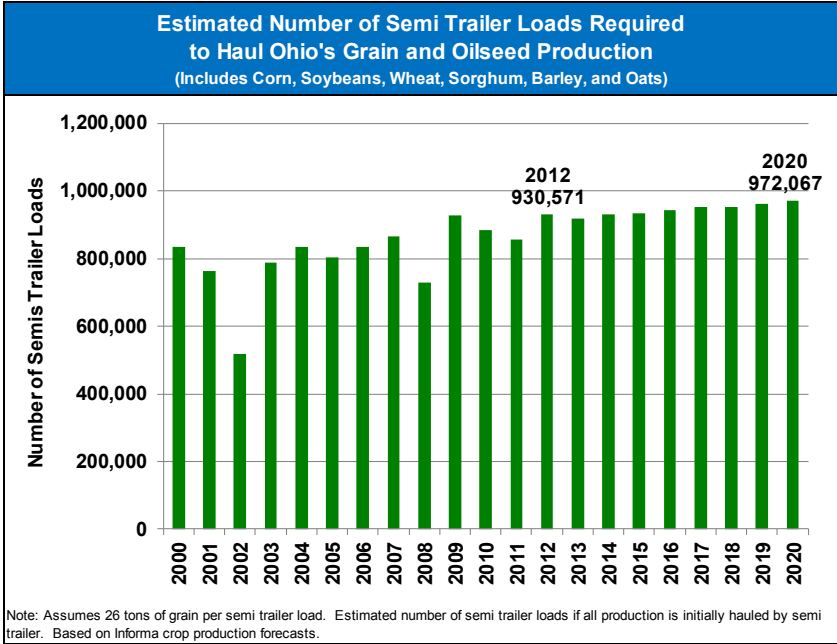


SOY TRANSPORTATION COALITION

RURAL INFRASTRUCTURE: *A More Productive Path Forward*

Ohio Agricultural Production and Rural Infrastructure

Rural Infrastructure Trends							
	Then			Now			Change
	Year	Quantity	Percentage of U.S.	Year	Quantity	Percentage of U.S.	Percentage Change in Quantity
Off Farm Storage (million bushels)	1986	318	3.5%	2011	412	4.1%	29%
On Farm Storage (million bushels)	1986	436	3.2%	2011	500	3.9%	15%
Estimated Average Tractor Weight (lbs.)	1950	5,318	98.6%	2011	9,764	98.0%	84%
Railroad Miles	1920	9,002	3.6%	2009 freight	5,286	3.8%	-41%
Road Miles	1940	18,592	3.4%	2008	122,973	3.0%	561%

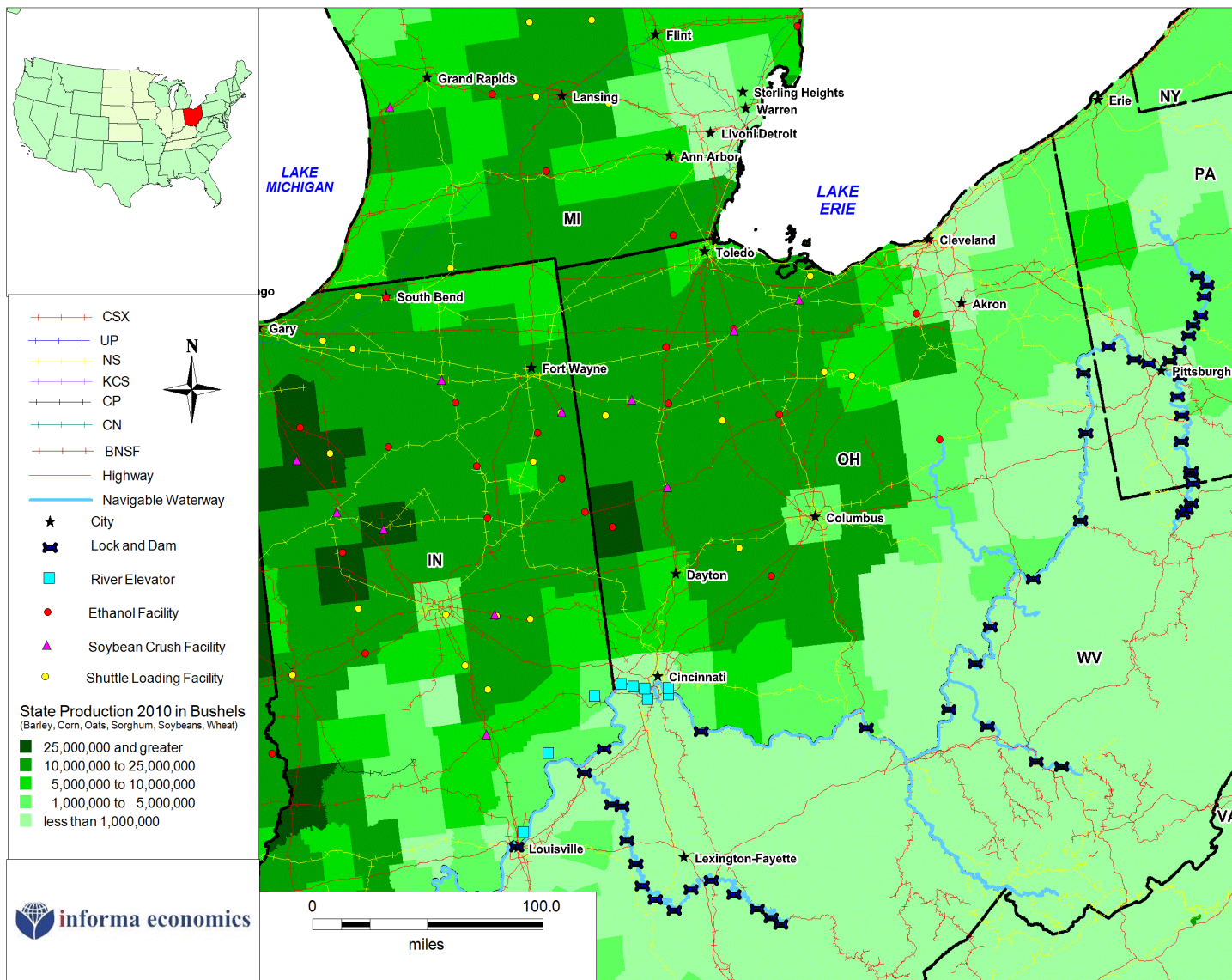




SOY TRANSPORTATION COALITION

RURAL INFRASTRUCTURE: A More Productive Path Forward

Ohio: Agricultural Production and Infrastructure



Infrastructure

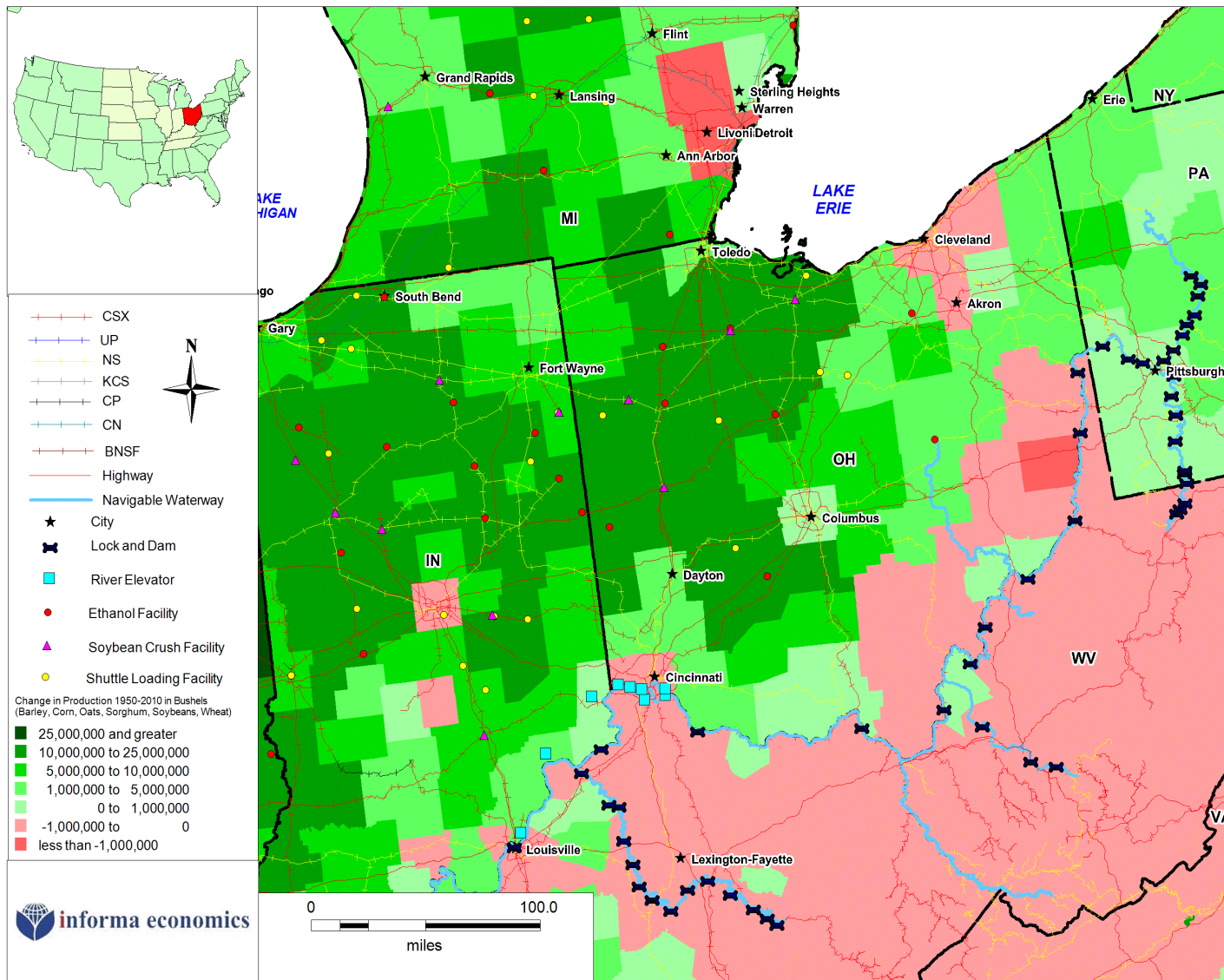
- Ohio crop production consists primarily of corn and soybeans.
- Crops are moved from production regions by truck, rail, and/or barge to elevators and processing facilities.
- Ohio has 1,726 miles of interstate; 5,286 miles of rail lines; 440 miles of waterways; 27,403 bridges and 122,973 miles of roadways.
- Ohio has four soybean crush facilities; nine shuttle facilities; seven ethanol plants; four river elevators; and 354 grain elevators.



SOY TRANSPORTATION COALITION

RURAL INFRASTRUCTURE: A More Productive Path Forward

Ohio: Change in Production from 1950 to 2010



Production

- Crop production has been increasing in the majority of the state, except within a number of counties in central eastern and south eastern Ohio.
- Production of grains and soybeans in the state has increased by approximately 520 million bushels from 1950 to 2010.
- Historically, Ohio has produced mostly corn, in addition to wheat, oats and soybeans.
- Corn production in Ohio has tripled with production over 531 million bushels. Soybeans have also grown. Ohio also produces wheat and oats.

Funded by the soybean checkoff